

# PRESSURE SEAL VALVE

## PRODUCTION MATERIALS

CLASS TYPE	600	900	1500	2500	4500
GATE	2 - 60	2 - 48	2 - 48	2 - 48	2 - 30
GLOBE	2 - 36	2 - 36	2 - 30	2 - 24	2 - 20
SWING CHECK	2 - 42	2 - 42	2 - 42	2 - 42	2 - 30
TILTING CHECK	2 - 42	2 - 42	2 - 42	2 - 42	2 - 30
Y-GLOBE	2 - 36	2 - 36	2 - 30	2 - 24	2 - 20
ANGLE GLOBE	2 - 30	2 - 30	2 - 24	2 - 24	2 - 20

- Carbon Steel : ASTM A216-WCB or Equivalent
- Alloy Steel : ASTM A217-WC6,WC9,C5,C12,C12A, ASTM A182-F91 or Equivalent
- Stainless Steel : ASTM A351-CF8,CF8M,CF3,CF3M, CN7M or Equivalent
- Duplex Stainless Steel : ASTM A995-1A,2A,4A,5A or Equivalent
- Special Alloy Steel : Inconel 625, Incoloy 825, Hastelloy C, Monel ASME SA designation material(e.g ASME SA217-WC6)

## DESIGN

Pressure seal valve are intended for high pressure and high temperature applications in all types of fluid, except where severe coking may occur.

A selection of design and material would give an excellent service in nuclear steam generating stations, industrial/chemical plants and thermal power plants.

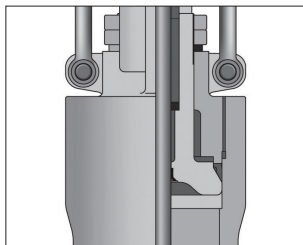
The pressure seal valve provide the most efficient use for flow passage and sealing, and result in significant weight saving and ease and simple installation and maintenance. Manufacturing and quality assurance procedures include extra controls of dimensional and non-destructive examinations and tests on critical areas such as gasket sealing, weld ends, or stellite sealing surfaces.

## CONSTRUCTION

- BODY AND BONNET
  - BODY : Flow areas are designed for minimum turbulence and pressure drop.
  - BONNET : Ample stuffing box and stellite back seat are to guide accurately stem and back seat.
- When designing a PK valve, casting of body and bonnet shall be considered thoroughly as a quality requirement.

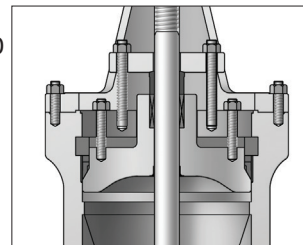
### - BONNET TYPE

Type A



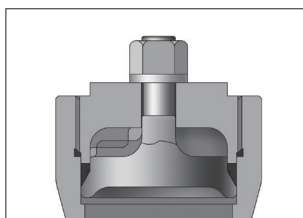
GATE  
Class 600,900,1500 & 2500  
Size 4" & smaller  
GLOBE  
Class 600,900,1500  
Size 4" & smaller  
Class 2500  
Size 3" & smaller

Type B



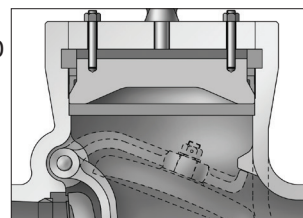
GATE  
Class 600,900,1500 & 2500  
Size 6" & larger  
GLOBE  
Class 600,900,1500  
Size 6" & larger  
Class 2500  
Size 4" & larger

Type C



SWING CHECK  
Class 600,900,1500 & 2500  
Size 4" & smaller  
Class 2500  
Size 3" & smaller

Type D



SWING CHECK  
Class 600,900,1500 & 2500  
Size 6" & larger  
Class 2500  
Size 4" & larger