

**J-SERIES**

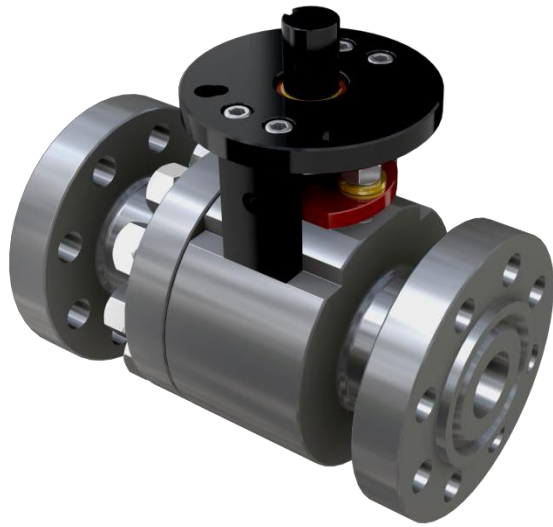
# REMINGTON VALVE

Severe service Ball Valves



## J-SERIES VALVE GUIDE

*Engineered Solutions for Critical Service Applications.*



## Remington Metal Seated Ball Valves

At Remington Valve we engineer and design valves for the Power Generation, Refining, Petrochemical, Chemical, Mining, Pulp & Paper industries. We are committed to providing high-quality severe service ball valve solutions to improve efficiency and productivity for our customers.

### J-Series Severe Service Valve (JSV)

The J-Series Valve offers customer flexibility and durability in a full port or regular port configuration. This Series is designed for heavy-duty service from high-cycle to slurry and corrosive environments to erosive applications.

#### Critical Service Design

Remington has a large library of custom designs for the most common applications. We also design valves based on customer needs and specific applications. Each design is based on ASME B16.34 specifications.

#### Difference by Design

**Ball and Seat Coating** – Remington offers Chrome Carbide, Tungsten Nickel Carbide, Colmonoy Spray and Fuse and specialty coatings for our ball and seat sets. Application is performed by fully automated robotic HVOF spray guns and provides a consistently dense coated surface.

**Lapping** makes the difference; automated lapping machines lap the ball to a seat creating a mated lapped set all while maintaining Class VI shutoff.

Our seats are fully protected from the flow in the open position eliminating erosive effects of the material.

Our **Floating Ball Design** uses a Belleville spring to energize the contact between the ball and the seat maintaining a seal in low pressure services. The ball is also pressure energized into the seat by the up and down stream pressure the valve is subject to.

Remington incorporates a **Dual Spring** in the presence of solids to eliminate solid particles from entraining themselves in seat pockets. This allows the ball to handle thermal shock and grows accordingly to avoid valve seizure.

#### Full Automation Facilities

Remington provides full automation services for applications including and not limited to: mining slurries, sodium solutions, hot gas, coal slurries and pump isolations.

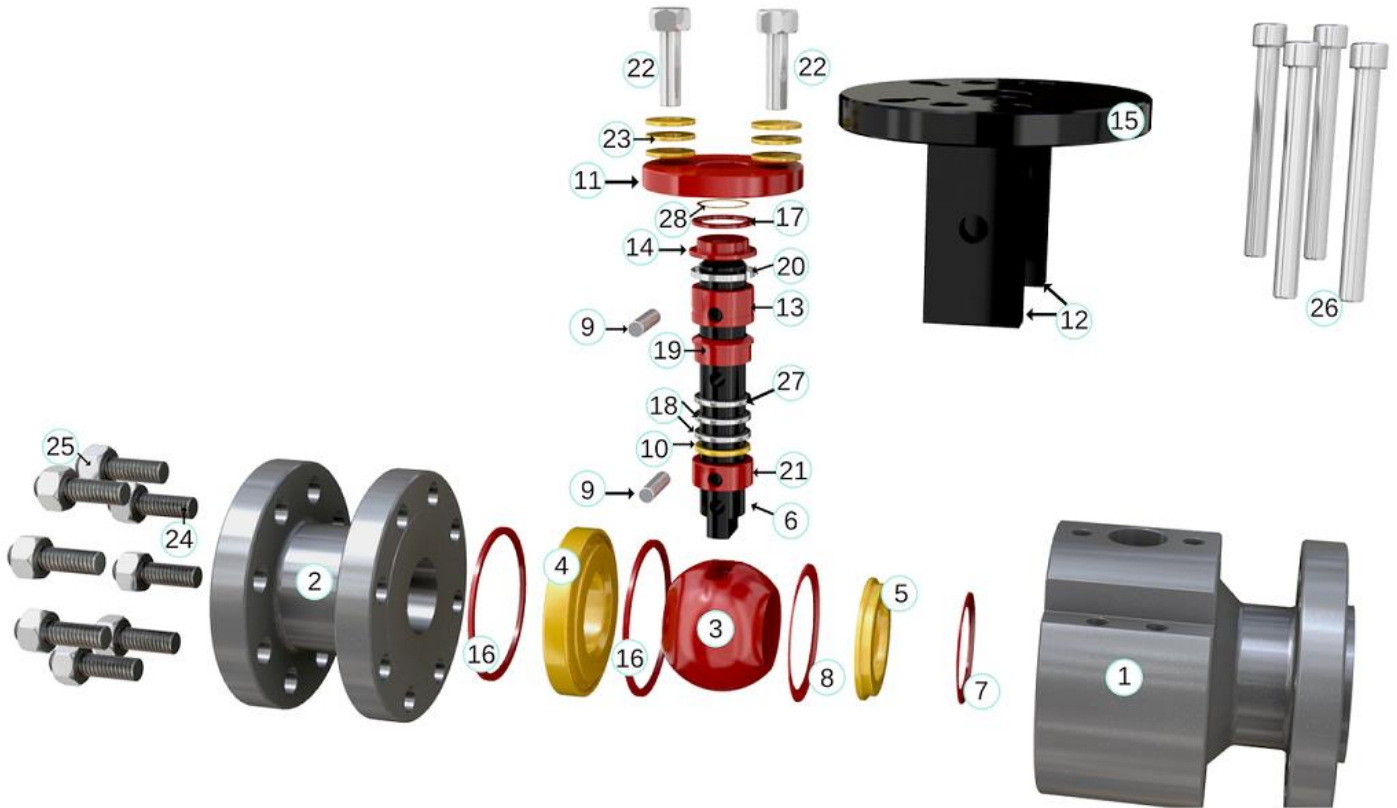
JSV offers ½ through 24 inch 150# through 4500# ANSI Class.

### VALVE SOLUTIONS FOR TODAY'S INDUSTRIAL NEEDS

- High Temperature Applications up to 1450° F
- High Pressure Applications
- Solids Handling
- Corrosive Environments
- Erosive Applications
- High Cycle
- Harsh Environments
- Inherently Fire Safe
- Emergency shutdown valves
- Blow-Out Proof Stem Design
- Custom Face to Face Design
- Studded Valves
- Cryogenic Valves
- Double block and bleed
- Fugitive Emissions
- Silicon Sands
- High Alloy Materials
- Low Temperature Carbon Steel
- High Temperature Stainless Steel

*Resilience, Quality and Performance*

## J-SERIES DUAL SPRING VALVE



### A CLOSER LOOK

- |                           |                           |
|---------------------------|---------------------------|
| 1. BODY                   | 15. MOUNTING FLANGE       |
| 2. END CONNECTION         | 16. GASKETS BODY          |
| 3. BALL                   | 17. SNAP RING             |
| 4. DOWNSTREAM SEAT        | 18. PACKING RINGS         |
| 5. PUSH RING              | 19. PACKING FOLLOWER      |
| 6. STEM                   | 20. HOOPSTER RING         |
| 7. INNER LOAD SPRING      | 21. INNER COLLAR          |
| 8. SOLIDS EXCLUDER SPRING | 22. STUD (GLAND)          |
| 9. RETAINER PINS          | 23. BELLVILLE SPRINGS     |
| 10. PACKING BUSHING       | 24. STUD (BODY)           |
| 11. GLAND FLANGE          | 25. NUT- HEAVY HEX (BODY) |
| 12. MOUNTING LEG          | 26. SOCKET CAP SCREW      |
| 13. OUTER COLLAR          |                           |
| 14. UPPER BUSHING         | 27. ANTI EXTRUSION RING   |
|                           | 28. WASHER                |

*Custom Designs for the toughest applications.*



# **REMINGTON VALVE**

*Made to Measure. Built to Last.*

Office: (832) 413-4400

Fax: (281) 974-3595

[www.remingtonvalve.com](http://www.remingtonvalve.com)

[sales@remingtonvalve.com](mailto:sales@remingtonvalve.com)